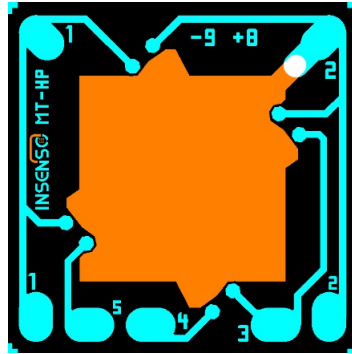


# IPD35 SERIES - Mobility Technology

Absolute and gage silicon pressure sense dies



## Key Features

- Secondary passivation for increased robustness
- High reliability and stability
- Low pressure and temperature hysteresis
- Fast response
- High impedance bridge
- Pressure proportional output signal
- Cost efficient through compact size

## Applications

- Automotive applications
- Industrial controls
- Medical instrumentations
- HVAC applications
- Encapsulated pressure sensors
- Board level pressure sensors

## Media

- Dry air
- Oil filled transmitters
- Non-corrosive gases
- Vacuum applications

## Technology

- Piezo resistive Wheatstone bridge utilized with glass back plate

## Shipping

- Wafers on tape and frame
- Waffle pack on request for samples

## Specification

Parameter	Range	Min.	Typ.	Max.	Unit
<b>Electric and environmental</b>					
Bridge resistance	All	5.0	5.5	6.0	kOhm
Supply voltage	All		5	12	V
Operating Temperature	All	-40		+150	°C
Storage Temperature	All	-50		+150	
<b>Temperature coefficient<sup>a)</sup></b>					
Offset	All	-0.04	±0.02	+0.08	%FSS/K
Output span	All		-0.20		
Bridge resistance	All	+0.31	+0.35	+0.39	%/K
<b>Performance</b>					
Offset	All	-25	0	+25	mV@5V
Non linearity <sup>b)</sup>	All		<0.3		%FSS
Pressure hysteresis	All		<0.05		
Temperature hysteresis <sup>c)</sup>	All		<0.1		%FSS/year
Long-term stability	All		<0.3		
<b>Full scale output</b>					
IPD35-HP-xxx001B	1bar		60		mV@5V
IPD35-HP-xxx2.5B	2.5bar	60	100	140	
IPD35-HP-xxx004B	4bar	60	100	140	
IPD35-HP-xxx010B	10bar	60	100	140	
IPD35-HP-xxx025B	25bar	60	100	140	
IPD35-HP-xxx100B	100bar	60	100	140	
Customized	Cust.		Cust.		

a) 25°...85°C

b) End point straight line

c) 25°...125°...25°C

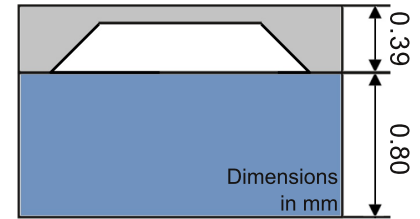
# IPD35 SERIES - Mobility Technology

Absolute and gage silicon pressure sense dies

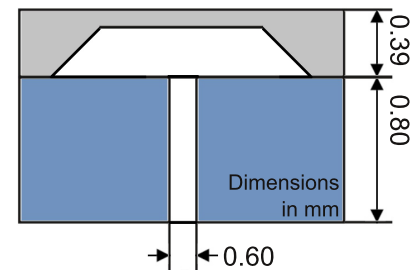


## Options

### IPD35-HP-08Axxxx



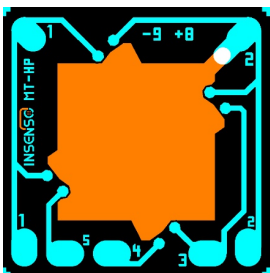
### IPD35-HP-08Gxxxx



Parameter	Range	Min. from front side	Min. from rear side	Unit
<b>Overload and burst pressure</b>				
IPD35-HP-xxx001B	1bar	>15	>10	bar
IPD35-HP-xxx2.5B	2.5bar	>25	>20	
IPD35-HP-xxx004B	4bar	>40	>20	
IPD35-HP-xxx010B	10bar	>60	>40	
IPD35-HP-xxx025B	25bar	>75	60	
IPD35-HP-xxx100B	100bar	>200	60	
Customized	Cust.	Cust.	Cust.	

## Die Layout and Size

### High Pressure (HP)

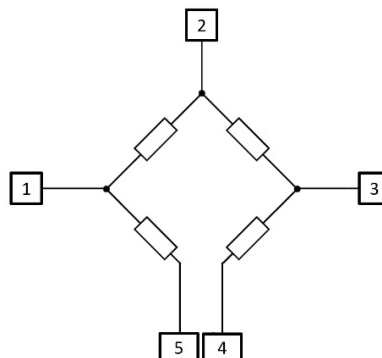


1.65 x 1.65 mm

## Electrical Connection

Bondpad Signal

Bondpad	Signal
<b>Output</b>	
1	-Vout
2	+Vsupply/substrate
3	+Vout
4	-Vsupply
5	-Vsupply



## Ordering Code

